

- Wide 4.5V-18V Input Voltage Range
 - 0.6V-7V Output Voltage Range
 - 5A Continuous Output Current
 - Integrated 42mΩ/17mΩ R_{ds(on)} of HS/LS Power MOSFETs
 - Fixed 1ms Soft-start Time
 - Selectable 400KHz, 800KHz and 1.2MHz Switching Frequencies
 - Selectable PFM and USM Operation Modes
 - Cycle-by-Cycle Current Limiting
 - Output Over-Voltage Protection
 - Over-Temperature Protection
 - Available in a QFN 12-leads 2mmx3mm Package
-
- High End DTV
 - Set-top Box, XDSL Modem, Personal Video Recorders
 - Server, Cloud-Computing, Storage
 - Telecom & Networking, Small-cell Base Stations, Point-of-Load (POL)
 - IPCs, Factory Automation

The SCT2250 is a high efficiency synchronous step-down DC-DC converter with 4.5V-18V input voltage range and adjustable output voltage down to 0.6V. It offers a small saving 2mmx3mm QFN package that supplies continuous 5A output current. The device fully integrates high-side and low-side power MOSFETs with 42mΩ/17mΩ on-resistance to minimize the conduction loss.

The converter requires a minimum number of external components and is available in a QFN- 12 (2mmx3mm) package.

Board Number	IC Number
EV2250-B-04A	SCT2250

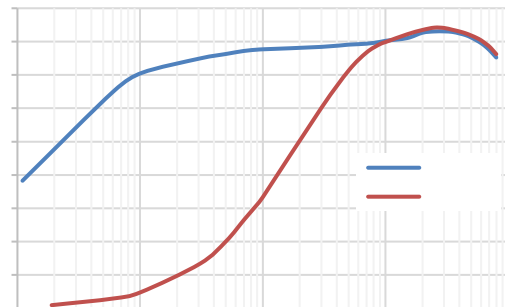
Table 1. Performance

Specifications are at TA = 25°C

Parameter	Condition	Value
Input Voltage	DC up to V	4.5V-18V
Output Voltage		1V ± 1%
Output Current	Continuous DC current	5A
Frequency	Default	800KHz



EV2250-B-04A QFN package



Efficiency vs. Output Voltage



Evaluation board EV2250-B-04A is easy to set up to evaluate the perfor-10(0 rd)-35.3bcrd 1(t-22(p)-TQq0.00000912 0 612 7

Figure 3. Evaluation Board Schematic

Table 2. Bills of Materials

Manufacture	Comment	Designator	Description	Quantity
PANASONIC	Not Install	C1 C13,	100uF, 35V, 10mm*12.5mm (DxL),F=5mm	0
Wurth Electronik	885 012 109 014	C2, C3,	22uf, 25V, 1210	2

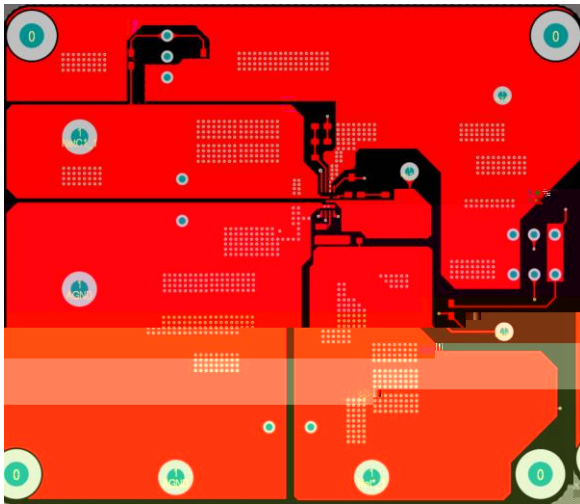


Figure 4. Top Layer

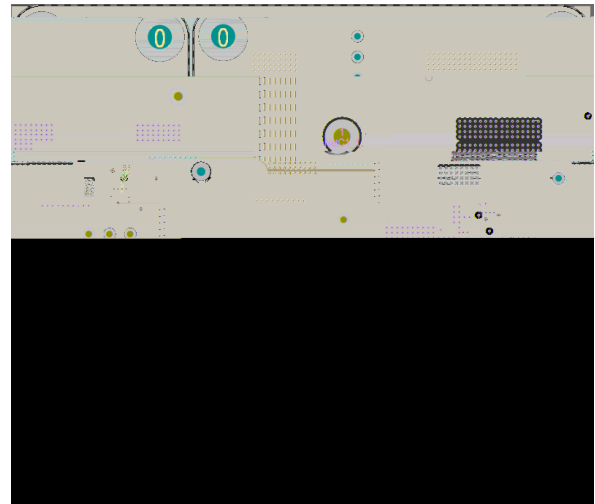


Figure 5. Inner Layer1

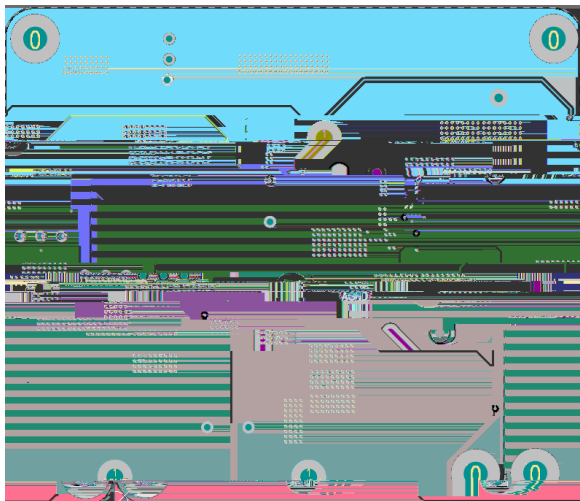


Figure 6. Inner Layer2

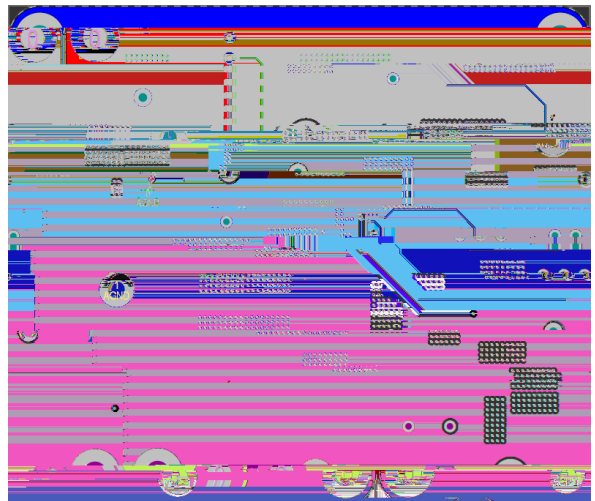


Figure 7. Bottom Layer

Vin=12V, Vout=1V, 5A loading, unless otherwise noted

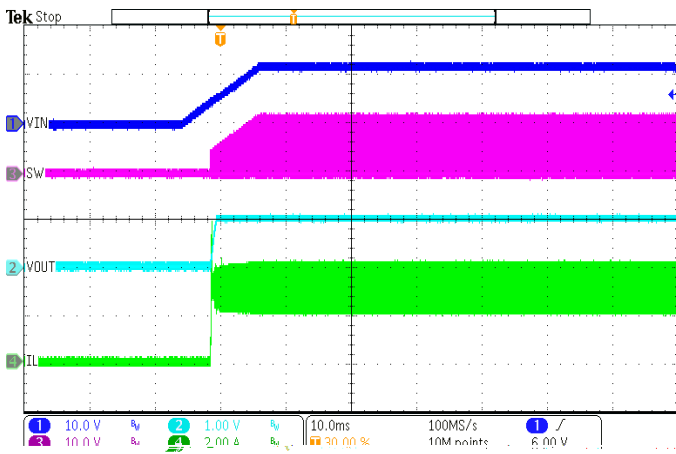


Figure 8. Power Up

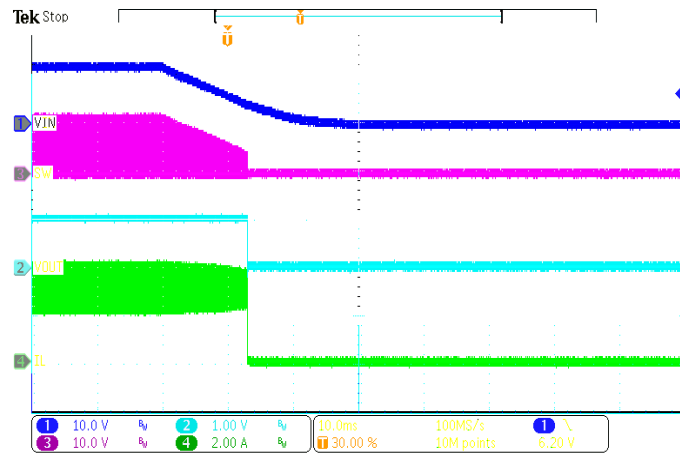


Figure 9. Power Down

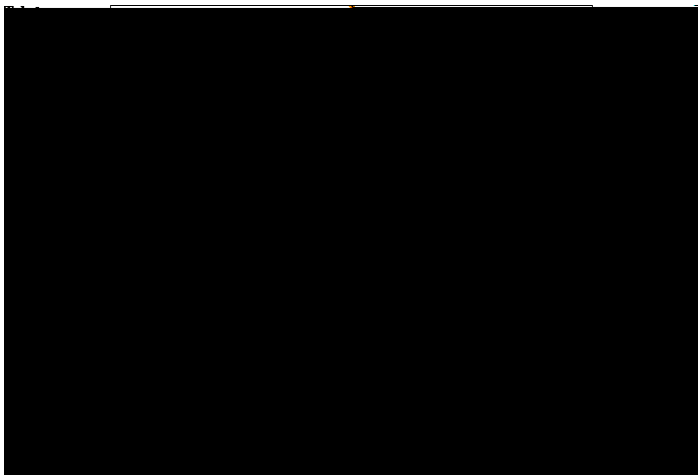


Figure 10. Switching Waveforms and Output Ripple
Iout=0.1A

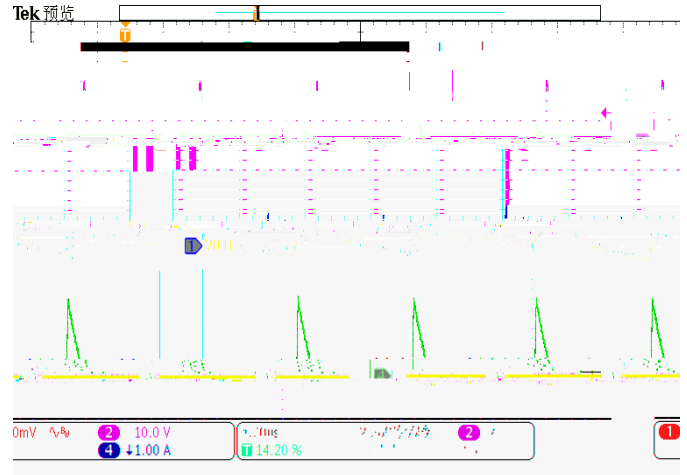


Figure 11. Switching Waveforms and Output Ripple in PFM
Iout=600mA

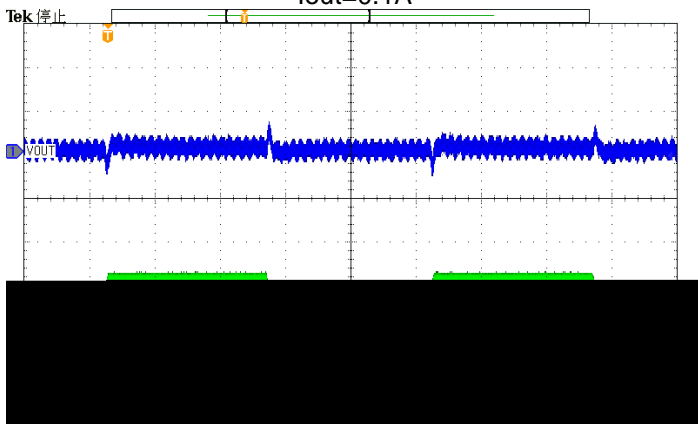


Figure 12. Load Transient
(0.2A-7.8A, SR=250mA/us)

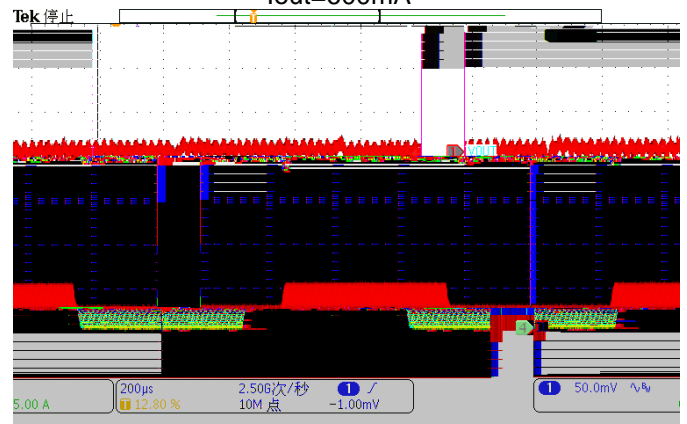


Figure 13. Load Transient
(0.2A-0.4A, SR=250mA/us)



IMPORTANT NOTICE

This evaluation board kit being sold or provided by Silicon Content Technology is intended for use for ENGINEERING DEVELOPMENT OR EVALUATION PURPOSES ONLY and is not provided by SCT for commercial use. As such, the evaluation board herein may not be complete in terms of required design, marketing, and/or manufacturing related protective considerations, including but not limited to product safety measures typically found in finished commercial goods. The user assumes all responsibility and liability for proper and safe handling of the goods. Further, the user releases SCT from all claims arising from the handling or use of the goods. Due to the open construction of the product, it is the user's responsibility to take all